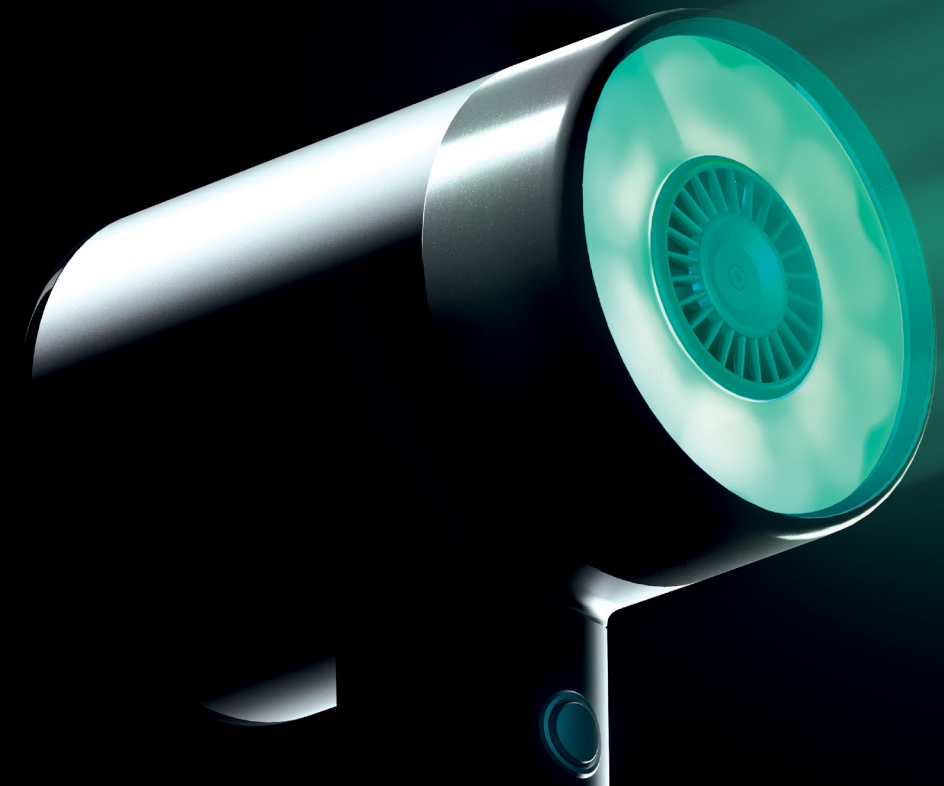


AirLight Pro

The next generation in hair drying.

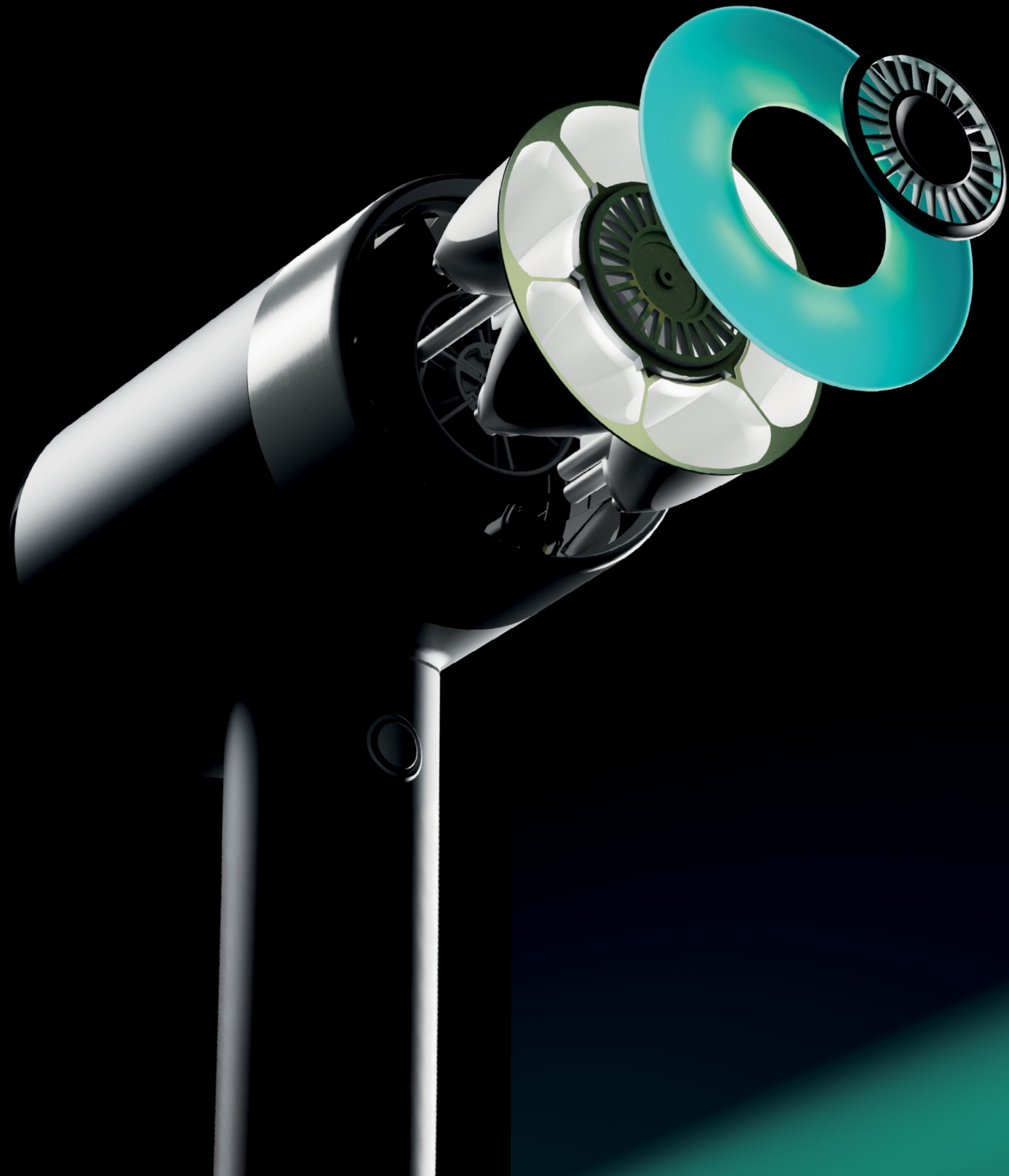


Scan to
discover more.

L'ORÉAL
PROFESSIONNEL
PARIS

[f lorealparis.com](https://www.lorealparis.com) | [@lorealpro](https://www.instagram.com/lorealpro) | [lorealpro_education_us](https://www.facebook.com/lorealpro_education_us) | [@lorealpro](https://www.tiktok.com/@lorealpro)
[lorealprou](https://www.youtube.com/lorealprou) | [us.lorealparis.com](https://www.us.lorealparis.com)

P2849400



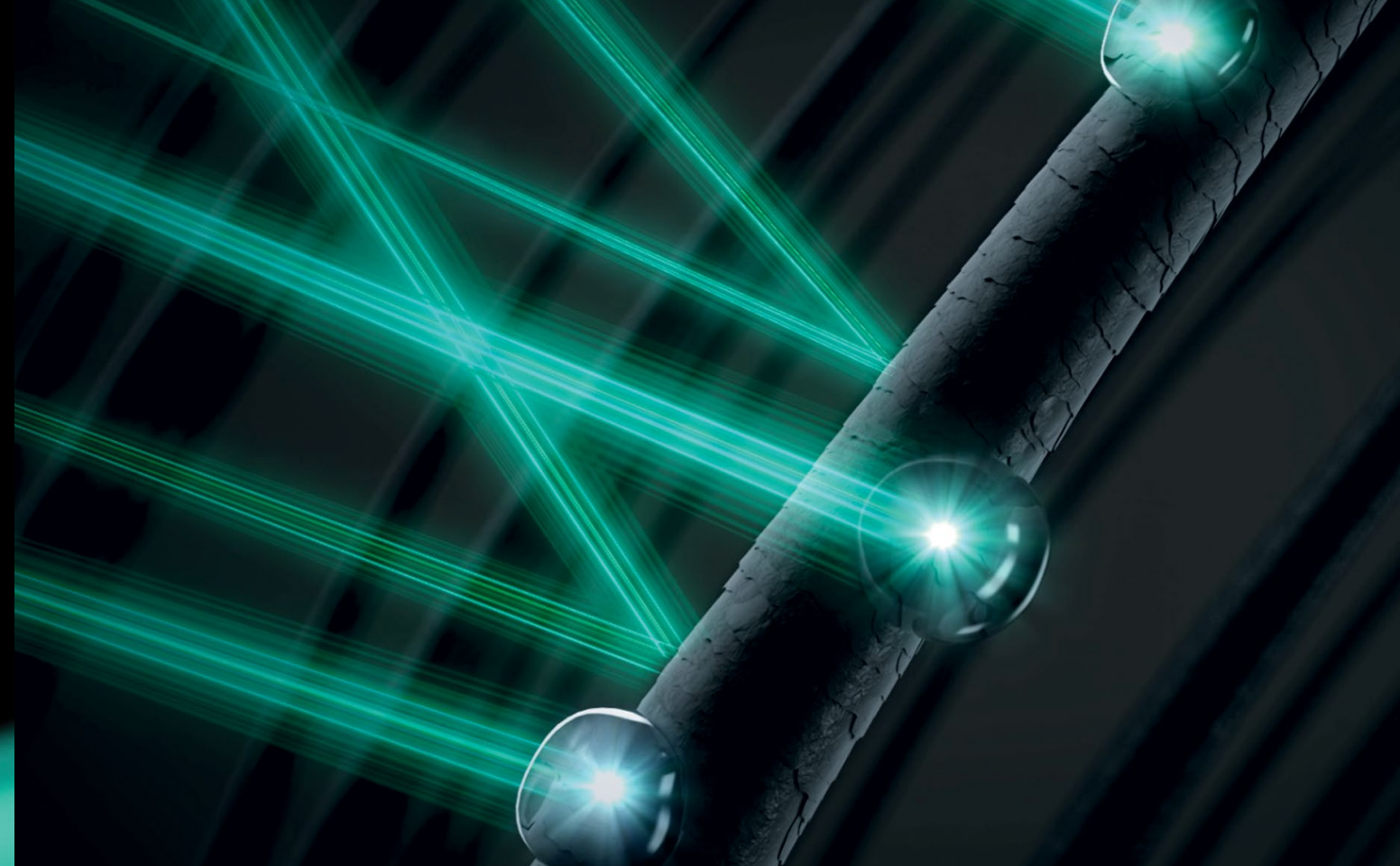
AirLight Pro

**Dry with the speed of light.
Without damage.**

**Our first professional hair dryer
augmented with infrared light.**

14% faster drying.¹
11% less energy used.¹
Hydration locked in.

**A patented
groundbreaking
technology.**



Infrared light technology.

AirLight Pro is powered by **infrared light**,
wind, and heat up to 285°F without damage.¹

Infrared light is a direct form of energy that targets
water molecule, replicating natural evaporation.

¹No additional damage, AirLight Pro vs naturally dried hair. Max temperature achievable with the concentrator attachment.

The science of **infrared** light.

Traditional **convection**.

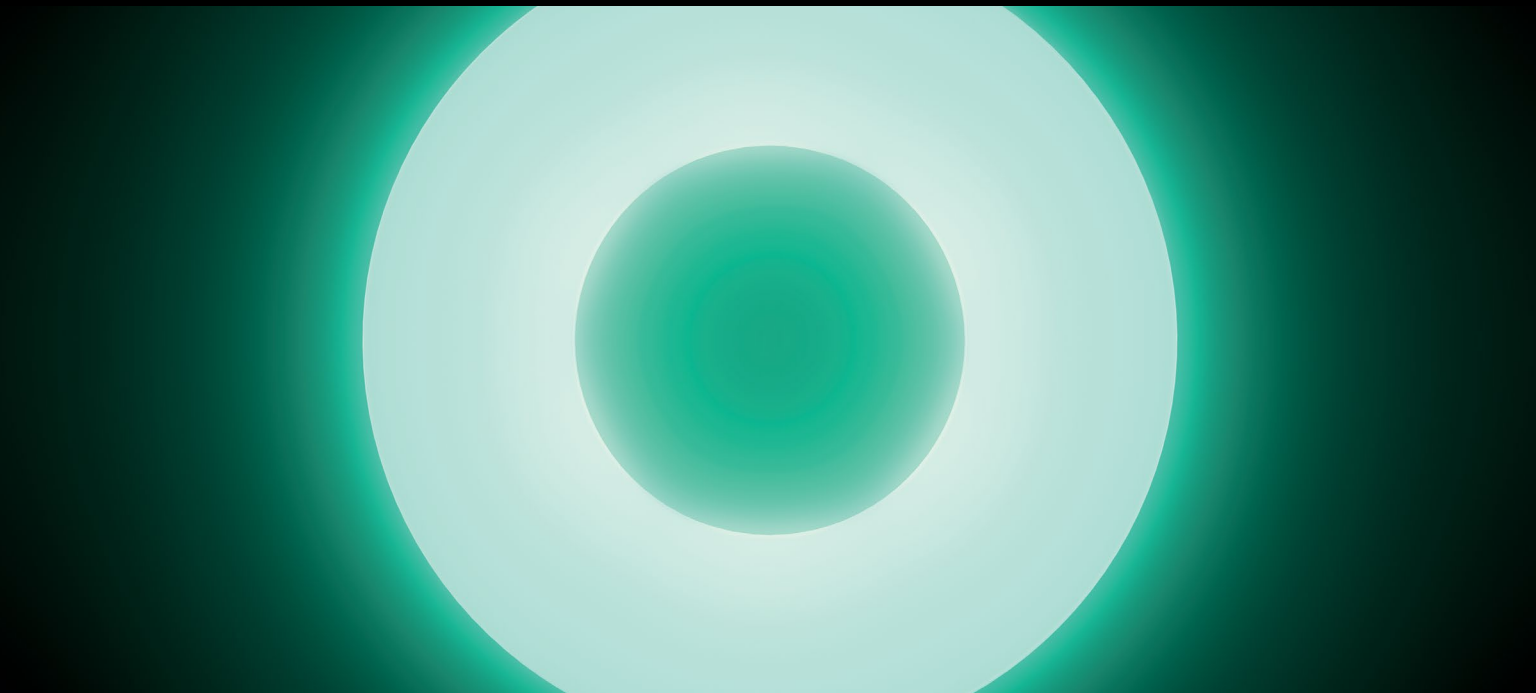


Traditional hair dryers rely on convection and wind. Convection uses hot metallic coils with an electric resistance to generate heat.

A fan then creates airflow over the heating element.

Convection heating can result in energy loss and uses high temperatures.

Infrared light.



AirLight Pro also uses infrared light technology.

Infrared light carries heat using electromagnetic waves.

It's a targeted and an efficient form of energy.

Through a combination of infrared light, heat, and wind, it limits the time hair is exposed to heat.

A breakthrough tech with infrared light and heat.

Infrared Light Technology.

A hybrid hair dryer featuring a professional calibration of heat, wind, and **infrared light** for fast drying, reaching up to 285°F without damage.¹

Engineered to last.

17-blade high-speed motor designed to last. Tested to last 10 years of professional use.²

Powerful.

130mph wind speed (Category 4 hurricane level), while remaining quiet.

Smart filter.

Easy to access filter in the back. Notifies when filter needs to be cleaned.

Lightweight.

1.7lb.

Extended cord.

With no power brick.

Cool-shot button.

Hold to invert temperature and blow a cool shot of air to lock in styles and shapes.

¹No additional damage, AirLight Pro vs naturally dried hair.

Co-developed with pros, for pro use.

Powerful.

17-blade high-speed motor propels heat up to 285°F and wind up to 130mph.¹

Ultra-customizable.

Select precise temperature and airflow.²

Lightweight.

Total weight of 1.7 lb.

Strong hold attachments.

Strong magnetic, auto-detect attachments.

Built to last.

Motor and light tested to last 10 years of professional use.³

Extended cord with no power brick.

For easy movement and handling.



¹ Max temperature achievable with the concentrator attachment.

² AirLight Pro app and internet connection required. Available for App Store and Google Play. Certain settings accessible only with attachments.

³ Corresponding to 2 cumulative hours of use per day, 5 days a week.

2 powerful attachments included.

Magnetic strength to attach to nozzle for pro use.

RFID technology auto-detects the attachment used for optimal temperature and airflow settings.



The concentrator.

Designed for high-definition smoothing and precise styling.



The diffuser.

Designed to preserve natural curl patterns while providing definition to curly and coily hair.



Connected, customizable experience with AirLight Pro app.

Choose between standard mode or custom mode, with pre-set settings or customize your own signature settings.

Standard mode:

- 3 heat and 3 airflow settings
- No app required.

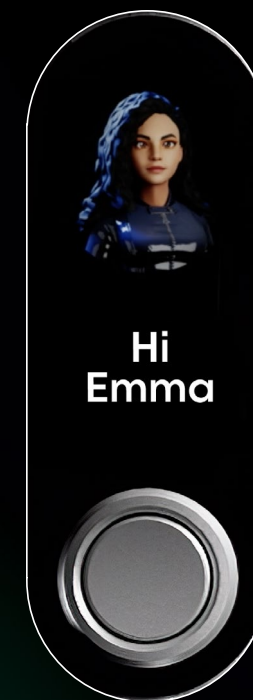
Custom mode:

- Customize your own signature settings with the AirLight Pro app. Adjust in increments of 5% for airflow and 15-20°F.¹
- Or select pre-set sleek, curly, and coily settings.
- Custom settings will be saved without the need to reset each time.



Easy to access app:

Hold both the temperature and airflow buttons for 3 secs to display the QR code, then scan with your phone to set up.



Tested on all hair types.



Scan here
for tutorials.



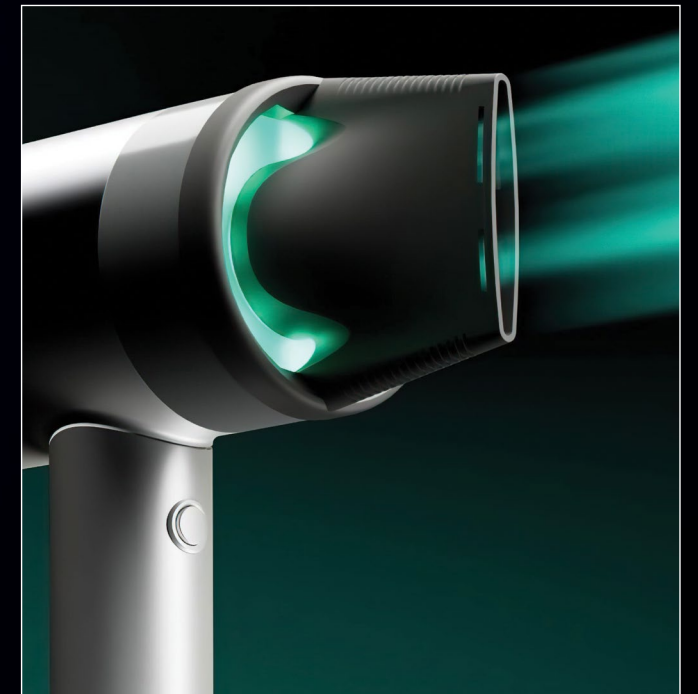
Curly hair.



Coily hair.



Straight hair.



The collaboration between pro and tech.

L'ORÉAL × **Zuvi**
PROFESSIONNEL
PARIS

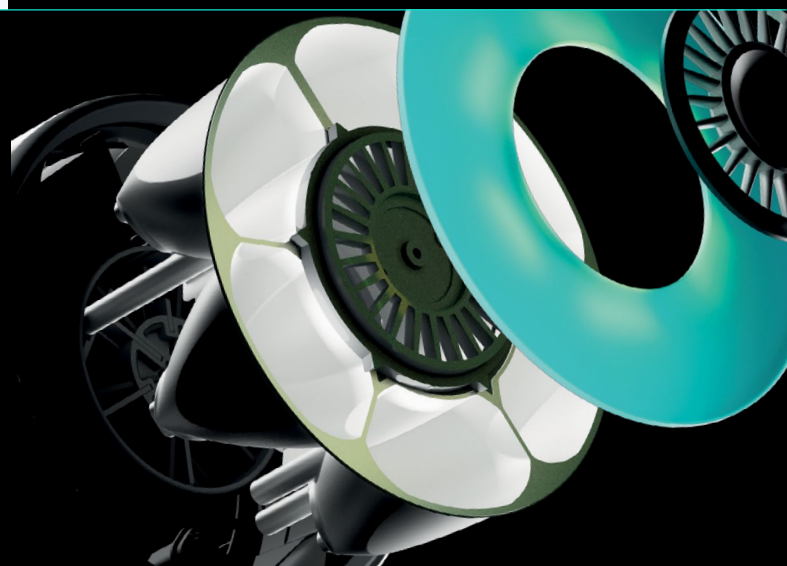


L'ORÉAL
PROFESSIONNEL
PARIS

L'Oréal Professionnel offers professional beauty expertise by drawing on over 110 years of knowledge and support for the hairdressing sector. The world's historical professional brand for hairstylists partners.

Zuvi

Technology brand that combines luxury, innovation to reinvent essential beauty tools.



Features:

- Infrared light technology.
- 17-blade high speed motor.
- 130mph wind speed.
- Max temperature: 285°F.¹
- 2 auto-detect magnetic attachments (RFID).
- Cool-shot button.
- Smart, easy to access filter on the back of the dryer.
- **Standard mode:**
Access 3 heat and 3 airflow settings on handle.
- **Custom mode:**
With connected app²: Customize your own signature settings. Adjust in increments of 5% for airflow and 15-20°F.
Pre-set sleek, sleek, curly, and coily settings.
- Quiet: 76 decibels.
- Lightweight: 1.7 lbs.
- 2 year limited warranty – Scan below for details.



Scan here
for FAQs

¹Max temperature accessible with the concentrator attachment.
²AirLight Pro app and internet connection required. Available for App Store and Google Play.