

PROFESSIONAL SPLIT END CORRECTION PREVENTATIVE TREATMENT + CUTTING LOTION

is a dual action treatment that instantly repairs existing damage while dramatically reducing future damage. Utilizing a proprietary **bio reparative complex**, this advanced treatment **rebuilds and fortifies weakened areas** while a Thermo Marine Bonding System binds and seals broken fibers together. Use as a preventative treatment to maintain length or, as a cutting lotion to define sections, reduce blade friction and to prolong the shape of precision cuts.

WHAT YOU'LL NEED



SPLIT END CORRECTION PREVENTATIVE TREATMENT + CUTTING LOTION



Blow Dryer
Brazilian Blowout
Prolonic Blow Dryer



Fine Tooth Comb



Flat Iron
Brazilian Blowout ProDigital
Titanium Flat Iron



Hair Clips



Measuring
Cup



Nitrile Gloves



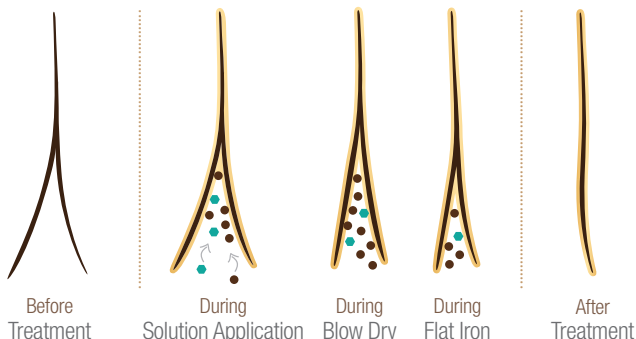
Color Applicator
Brush



Round Boar
Bristle Brush

HOW IT WORKS

- BRAZILIAN SUPER NUTRIENT COMPLEX
- THERMO MARINE BONDING SYSTEM
- BIO REPARATIVE COMPLEX



HOW TO PERFORM THE TREATMENT

- 1 Beginning with shampooed, slightly damp (not dripping) hair, use an applicator brush to lightly dust the solution onto the bottom 2 to 3 inches of hair or wherever you see splits or damage. You should use no more than ¼ oz. of solution per client. Only if the client has thick, long and/or very damaged ends will you use slightly more.
- 2 Comb product throughout the ends to ensure even distribution. There should be no product residue on the comb. If there is residual product, wipe product from comb and continue to comb through the ends until there is no visible residue.
- 3 Blow dry the hair as smooth as possible using a round boar bristle brush (do not use a round metal or ceramic brush). Keep the blow dryer at least 2 inches away from the hair to minimize steam.
- 4 Once the hair is completely dry, you will take 1 to 2 inch sections and flat iron the bottom 2 to 3 inches of the hair to seal in the product. The flat iron temperature should be 380°F. Pass over each section of hair at least 2 to 3 times, using light tension, gliding through the ends.

Once you have finished flat ironing the treatment is complete. **The hair does not need to be rinsed.** The client is free to exercise, swim, put the hair in a ponytail, clip or bun without worry.

The **Brazilian Blowout Professional Split End Correction Preventative Treatment** must be performed by licensed professional stylists. If the **Brazilian Blowout Professional Split End Correction Preventative Treatment** is ingested or comes in contact with eyes, call a physician. If you are nursing or pregnant do not use this product. Keep out of reach of children.

1.877.779.7706 brazilianblowout.com

FREQUENTLY ASKED QUESTIONS

Q. What is the difference between the Split End Correction Treatment and a Brazilian Blowout Smoothing Treatment?

A. Split End Correction Preventative Treatment is a 10 minute service that is only performed on the ends of the hair to instantly repair, mend and seal broken and split ends for up to 4 weeks. The Brazilian Blowout Smoothing Treatment is a 75 to 90 minute service that smooths, eliminates frizz and improves the health of the hair from roots to tips for up to 12 weeks.

Q. How does this service differ from at-home repair treatments?

A. Generally, at-home treatments provide a temporary conditioning and protective effect from wash to wash whereas the Brazilian Blowout Split End Correction Preventative Treatment instantly repairs broken damaged ends, providing 4 weeks of healthier ends protected against further breakage caused by everyday styling and environmental stressors.

Q. Who is the best candidate for this treatment?

A. Anyone who wants to improve the condition and integrity of their hair will benefit from this treatment, especially those who have fragile, over-processed ends. It's also recommended for clients looking to grow their hair longer as it helps maintain healthy ends without sacrificing length.

Q. How long does the treatment last?

A. Up to 4 weeks (and in some cases, longer) when you use the Açai Aftercare and Styling Products.

Q. What should I expect after I get this treatment done?

A. Healthier, stronger ends with less breakage and a noticeably improved texture.

“**GAME CHANGING
TREATMENT**”

COSMOPOLITAN ”

MAINTAINING HEALTHY ENDS AT HOME

After receiving this treatment we recommend clients use the following Aftercare and Styling products to prolong the reparative and protective benefits as hair is washed and styled in between appointments.

AFTERCARE

ANTI-FRIZZ SHAMPOO (12 oz.)

An exclusive, sulfate-free cleansing system extends the life of the Brazilian Blowout by maintaining the vital moisture and protein balance needed for optimal smoothness and radiant, frizz-free hair.



ANTI-FRIZZ CONDITIONER (12 oz.)

A specially formulated conditioner extends the life of the Brazilian Blowout by infusing the hair with vital moisture and essential nutrients that locks in moisture, locks out humidity, protects hair color and promotes smooth, radiant, frizz-free hair.



DEEP CONDITIONING MASQUE (8 oz.)

A creamy, rich, intense conditioning masque drenches the hair by coating each strand with nutritive proteins to eliminate frizz, promote shine and hydrate.



STYLING

PROTECTIVE THERMAL STRAIGHTENING BALM (8 oz.)

This powerful heat-activated formulation straightens waves/curls and tames frizzies while protecting the hair from heat styling and environmental stresses. 100% humidity resistant.

